

## New Dormitory to be opened on Shinagawa Campus in April 2026

TUMSAT is pleased to announce that it will locate the new dormitory for students and researchers on the Shinagawa Campus, aligning with the ongoing Shinagawa Campus Planning mission to enhance revitalization and globalization on campus (**scheduled to open in April 2026**).

**The new dormitory will serve as a residential facility fostering a diverse community where Japanese students, international students, and international researchers live together.**



[Rendering] Aerial view of the new dormitory

### Aims of the new dormitory

The establishment of the new dormitory aims to fulfill the following four functions, reflecting input from current students, parents and faculty members, as well as the roles of the existing campus dormitories and the International House, and anticipating various future campus needs.

- (1) Supporting students residing too far away from campus or facing financial difficulties, ensuring they can live comfortably on campus and fully engage in education and research activities. This initiative aims to nurture future leaders in oceanography, maritime affairs and fisheries, both domestically and internationally.
- (2) Accommodating the increased enrollment of the international students to foster a global educational environment on campus.
- (3) Providing accommodation for domestic/international researchers, facilitating their easy access to campus and promoting global and academic activities.
- (4) Encouraging students to develop leadership skills and global competencies through exchanges with students and researchers from diverse cultural background.

### Building overview

(room details are provided further below)

- Location: 4-5-7 Konan, Minato-ku, Tokyo (on the Shinagawa Campus)
- Site area: approx. 4,000 m<sup>2</sup>
- Building area: 1,298.21 m<sup>2</sup>
- Total floor area: 10,170.72 m<sup>2</sup>
- Structure/number of floors: reinforced concrete, 10 floors above ground.
- Design, construction, etc.: Daiwa House Group\*
- Total number of rooms: approx. 350 rooms

\*Representative company: Daiwa House Industry Co., Ltd.

Group companies: GKK Architects & Engineers, Daiwa LifeNext Co., Ltd., Fuyo General Lease Co., Ltd.



[Global Public Lounge] (1F) Open space with an integrated view of the courtyard



[Community plaza] Open space with good sight

The above rendering reflects the building operator's proposal; the design and other features may be altered to reflect future changes in the building plan.

[Note]

The number and specifications of rooms are subject to change in line with future project plan considerations.

## Rooms and capacity (tentative)

### ■ Rooms and capacity by room type (tentative)

| Room type, etc.  | Resident classification       | Number of rooms (capacity) |
|--|-------------------------------|----------------------------|
| Single Room A (Student)<br>9 m <sup>2</sup> or more/room + private balcony     | For Japanese students         | 48 (48)                    |
|  | For international students    |                            |
| Single Room B (Student)<br>13 m <sup>2</sup> or more/room + private balcony    | For Japanese students         | 278 (278)                  |
|  | For international students    |                            |
| Single Room C (Researcher)<br>13 m <sup>2</sup> or more/room + private balcony | For international researchers | 10 (10)                    |
| Couple's Room<br>26 m <sup>2</sup> or more/room + private balcony              | For international researchers | 10 (20)                    |
|  | For international students    |                            |
| Family Room A<br>39 m <sup>2</sup> or more/room + private balcony              | For international researchers | 5 (20)                     |
|  | For international students    |                            |
| Family Room B<br>52 m <sup>2</sup> or more/room + private balcony              | For international researchers | 1 (4)                      |
| <b>Total</b>   |                               | <b>352 (380)</b>           |



[View lounge] (2F–10F) View lounge with southern views



[Public space] (2F–10F) Residents chatting with each other

## Room specifications (tentative)

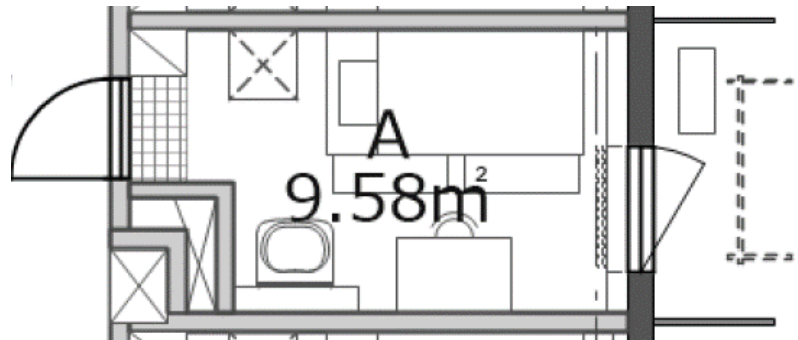
The equipment, furniture, fixtures, etc. provided in the rooms will differ by room type and resident classification as indicated below. In addition, residents have the option to rent items such as sheets, refrigerators, microwave ovens, televisions, and vacuum cleaners.

- Single Room A (private room for Japanese or international students): 9 m<sup>2</sup> or more per room with a private balcony

| Amenities and Furnishings   |
|---|
| •Air conditioner •Light fixture •Bed (with drawer storage) •Desk and chair with bookcase •Emergency helmet •Laundry pole •Curtains •Internet connection •Emergency flashlight •TV socket •Electrical outlets •Ceiling-hung shelves •Wall-hung pipes •Built-in shoe storage shelves •Screen door |

Single Room A is designed as a community-forming type of room, where up to 12 residents share common facilities including showers, toilets, a dining room, and a kitchen in one area.

[Room image]

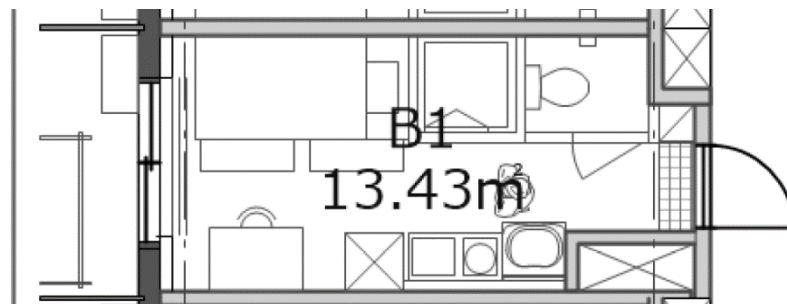


- Single Room B (private room for Japanese or international students): 13 m<sup>2</sup> or more per room with a private balcony

| Amenities and Furnishings   |
|---|
| •Mini-kitchen •Unit toilet •Shower room (no bathtub) •Air conditioner •Light fixture •Bed (with drawer storage) •Desk and chair with bookcase •Emergency helmet •Laundry pole •Curtains, IH cooker •Internet connection •Emergency flashlight •TV socket •Electrical outlets •Ceiling-hung shelves •Wall-hung pipes •Built-in shoe storage shelves •Screen door |

Single Room B is a private room designed for personal use, featuring a mini-kitchen, toilet, and shower room inside the room.

[Room image]



(Notes)

- Room areas, shapes, etc. may vary by room.
- Designs are subject to change in line with future plans.

(Reference) In addition, there are private rooms for international researchers, as well as accommodations designed for married couples and families for international researchers and students.

### Common facilities and services (tentative)

| Common facility  | Details   |
|--|---|
| <b>(1) Common areas (1st floor)</b> Accessible to non-residents.     |   |
| Global Public Lounge<br>(conversation area)                          | A relaxation space near the entrance for socializing and informal gatherings.   |
| Multipurpose room<br>(group works, international cultural exchanges) | A multipurpose room that can be used as a space for study and cultural activities etc. primarily by residents along with other TUMSAT's students. |
| Meeting room   | A space to be used for TUMSAT's purposes such as international exchanges, besides resident use.   |
| Common kitchen   | Kitchen for various events held in the meeting room   |
| Multipurpose restrooms   | Restrooms accessible for people with disabilities   |
| <b>(2) Residents-only portion</b>                                    |   |
| Public spaces<br>(all floors except 1st floor)*                      | Places for relaxation and social exchanges  |
| Laundry room<br>(all floors except 1st floor)                        | Coin-operated laundry washers/dryers  |
| Mail room (1st floor)  | Mailboxes (for all rooms), delivery boxes   |
| <b>(3) Facilities outside the building</b>                           |   |
| Bicycle parking area   |   |

Note: Common facilities are subject to change in line with proposals by the building operator or for other reasons.

| Service                             | Details  |
|-------------------------------------|--|
| Rental of home appliances and goods | Residents may rent bedding, appliances, etc. for a fee   |
| Internet connection                 | Wired and wireless internet access is available in the residence rooms/halls and common facilities; this access is toll free |
| Vending machines                    | Snacks and beverages available from coin-operated machines   |

Note: Service details are subject to change in line with proposals by the building operator or for other reasons.

### Future schedule (tentative)

- **May 2024: Start of the building construction**
- **February 2026: Completion of the building construction.**
- **March 2026: Start of the building operations**