

New Dormitory to be opened on Shinagawa Campus in April 2026

TUMSAT is pleased to announce that it will locate the new dormitory for students and researchers on the Shinagawa Campus, aligning with the ongoing Shinagawa Campus Planning mission to enhance revitalization and globalization on campus (**scheduled to open in April 2026**).

The new dormitory will serve as a residential facility fostering a diverse community where Japanese students, international students, and international researchers live together.



[Rendering]

The building operator's concept: A new dormitory designed to embrace light and wind from Tokyo Bay

Aims of the new dormitory

The establishment of the new dormitory aims to fulfill the following four functions, reflecting input from current students, parents and faculty members, as well as the roles of the existing campus dormitories and the International House, and anticipating various future campus needs.

- (1) Supporting students residing too far away from campus or facing financial difficulties, ensuring they can live comfortably on campus and fully engage in education and research activities. This initiative aims to nurture future leaders in oceanography, maritime affairs and fisheries, both domestically and internationally.
- (2) Accommodating the increased enrollment of the international students to foster a global educational environment on campus.
- (3) Providing accommodation for domestic/international researchers, facilitating their easy access to campus and promoting global and academic activities.
- (4) Encouraging students to develop leadership skills and global competencies through exchanges with students and researchers from diverse cultural background.

Building overview

(room details are provided further below)

- Location: 4-5-7 Konan, Minato-ku, Tokyo (on the Shinagawa Campus)
- Site area: approx. 4,000 m²
- Building area: 1,298.21 m²
- Total floor area: 10,170.72 m²
- Structure/number of floors: reinforced concrete, 10 floors above ground.
- Design, construction, etc.: Daiwa House Group*
- Total number of rooms: approx. 350 rooms

*Representative company: Daiwa House Industry Co., Ltd.

Group companies: GKK Architects & Engineers, Daiwa LifeNext Co., Ltd., Fuyo General Lease Co., Ltd.



[Global Public Lounge] (1F) Open space with an integrated view of the courtyard



[Community plaza] Open space with good sight

The above rendering reflects the building operator's proposal; however, the design and other features may be subject to change based on future modifications to the building plan.

Rooms and capacity

■ Rooms and capacity by room type

Room type, etc.	Resident classification	Number of rooms (capacity)
Single Room A (Student) 9 m ² or more/room + private balcony	For Japanese students	48
	For international students	
Single Room B (Student) 13 m ² or more/room + private balcony	For Japanese students	278
	For international students	
Single Room C (Researcher) 13 m ² or more/room + private balcony	For international researchers	10
Couple's Room 26 m ² or more/room + private balcony	For international researchers	10 (20)
	For international students	
Family Room A 39 m ² or more/room + private balcony	For international researchers	5 (20)
	For international students	
Family Room B 52 m ² or more/room + private balcony	For international researchers	1 (4)
Total		352 (380)



[View lounge] (2F–10F) View lounge with southern views



[Public space] (2F–10F) Residents chatting with each other

The number and capacity of rooms may be subject to change based on future modifications to the building plan.

Room specifications

The equipment, furniture, fixtures, etc. provided in the rooms will differ by room type and resident classification as indicated below. In addition, residents have the option to rent items such as sheets, refrigerators, microwave ovens, televisions, and vacuum cleaners.

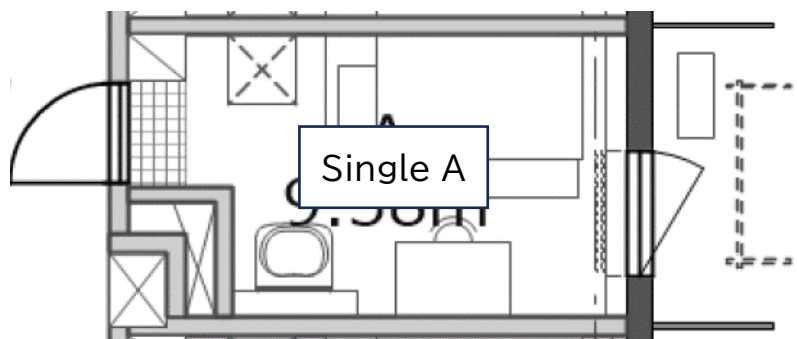
※Internet connection fees are included in the room fee. The common area maintenance fee is not charged. Utilities are paid separately by the residents.

- Single Room A (private room for Japanese or international students): 9 m² or more per room with a private balcony

Fee	Amenities and Furnishings
JPY 40,000 / month	<ul style="list-style-type: none"> •Sink •Mirror •Air conditioner •Light fixture •Bed (with drawer storage) •Desk and chair with bookcase •Emergency helmet •Laundry pole •Curtains •Wall-hung pipes •Built-in shoe storage shelves •Screen door •Intercom (no unlocking function) •Electrical outlets •Ceiling-hung hooks

Single Room A is designed as a community-forming type of room, where up to 12 residents share common facilities including showers, toilets, a dining room, and a kitchen in one area.

[Room image]

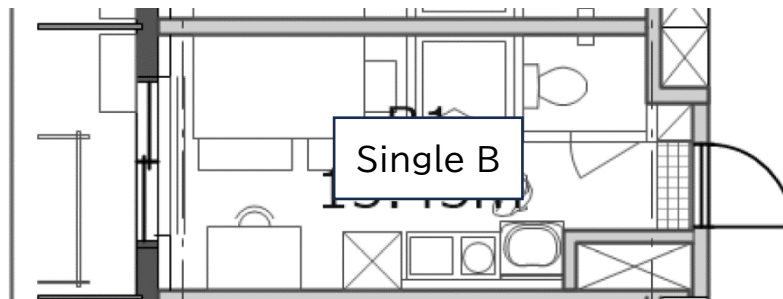


- Single Room B (private room for Japanese or international students): 13 m² or more per room with a private balcony

Fee	Amenities and Furnishings
JPY 65,000 / month	<ul style="list-style-type: none"> •Mini-kitchen •Toilet •Shower room (no bathtub) •Mirror •Air conditioner •Light fixture •Bed (with drawer storage) •Desk and chair with bookcase •Emergency helmet •Laundry pole •Curtains •Wall-hung pipes •Built-in shoe storage shelves •Screen door •Intercom (no unlocking function) •Ceiling-hung hooks

Single Room B is a private room designed for personal use, featuring a mini-kitchen, toilet, and shower room inside the room.

[Room image]



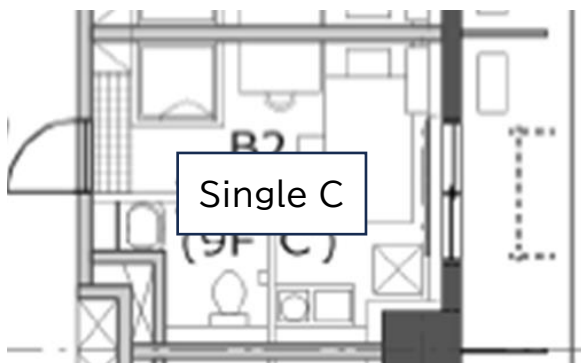
Notes:

- Room areas, shapes, and other features may vary from room to room.
- Designs are subject to change in line with future plans.

■ Single Room C (private room for international researchers): 13 m² or more per room

Fee	Amenities and Furnishings
JPY 80,000 / month	<ul style="list-style-type: none"> •Mini-kitchen •Toilet •Shower room (no bathtub) •Mirror •Air conditioner •Light fixture •Bed (with drawer storage) •Desk and chair with bookcase •Emergency helmet •Laundry pole •Curtains •Wall-hung pipes •Built-in shoe storage shelves •Screen door •Intercom (no unlocking function) •Ceiling-hung hooks •Refrigerator •TV and TV stand •Desk lamp •Wall clock

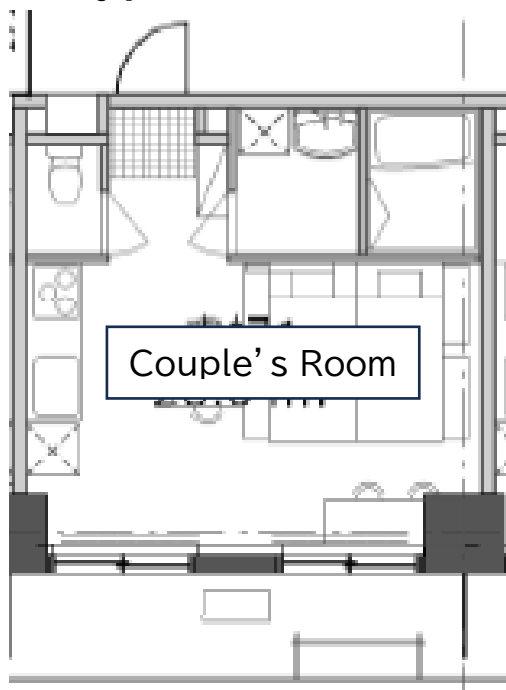
[Room image]



■ Couple's Room (private room for international researchers or students): 26 m² or more per room

Fee	Amenities and Furnishings
(International researchers) JPY 110,000 / month	<ul style="list-style-type: none"> •Kitchen •Toilet •Shower room •Sink •Mirror •Air conditioner •Light fixture •Bed •Desk and chair •Bookshelf •Emergency helmet •Laundry pole •Curtains •Umbrella stand •Shoe rack •Screen door •Intercom (no unlocking function) •TV and TV stand •Desk lamp •Wall clock •Washing and drying machines •Refrigerator •Microwave •Dining table and chairs •Mini-couch
(International students) JPY 80,000 / month	

[Room image]



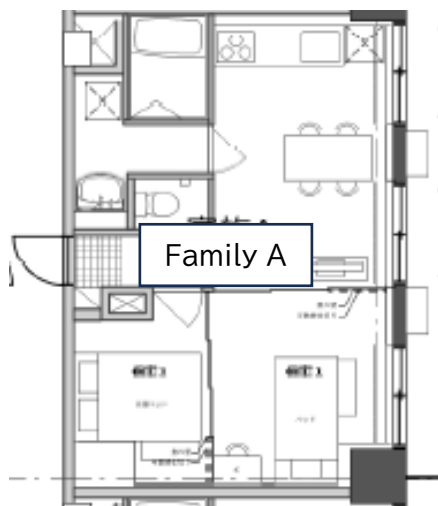
Notes:

- Room areas, shapes, and other features may vary from room to room.
- Designs are subject to change in line with future plans.

- Family Room A (private room for international researchers or students): 39 m² or more per room

Fee	Amenities and Furnishings
(International researchers) JPY 140,000 / month (International students) JPY 110,000 / month	・Kitchen ・Toilet ・Bath room (with shower) ・Sink ・Mirror ・ Air conditioner ・Light fixture ・Beds ・Desk and chair ・Bookshelf ・Emergency helmet ・Laundry pole ・Curtains ・Umbrella stand ・Shoe rack ・Screen door ・Intercom (no unlocking function) ・TV and TV stand ・Desk lamp ・Wall clock ・Washing and drying machines ・Refrigerator ・Microwave ・Dining table and chairs

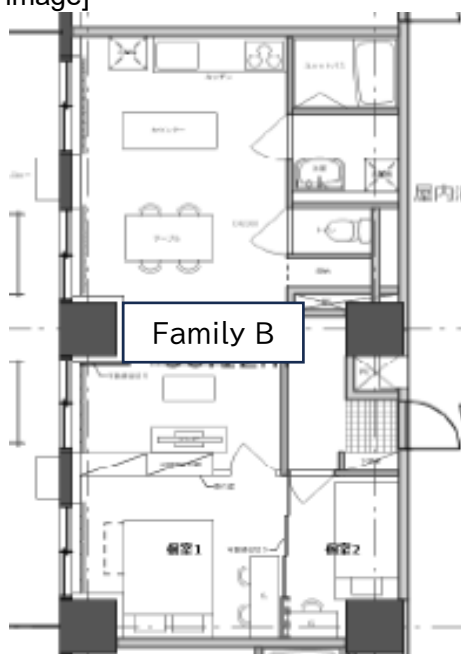
[Room image]



- Family Room B (private room for international researchers): 52 m² or more per room

Fee	Amenities and Furnishings
JPY 170,000 / month	・Kitchen ・Toilet ・Bath room (with shower) ・Sink ・Mirror ・Air conditioner ・Light fixture ・Beds ・Desk and chair ・Bookshelf ・Emergency helmet ・Laundry pole ・Curtains, ・Umbrella stand ・Shoe rack ・Screen door ・Intercom (no unlocking function) ・TV and TV stand ・Desk lamp ・Wall clock ・Washing and drying machines ・Refrigerator ・Microwave ・Dining table and chairs

[Room image]



Notes:

- Room areas, shapes, and other features may vary from room to room.
- Designs are subject to change in line with future plans.

Common facilities and services (tentative)

Common facility	Details
(1) Common areas (1st floor)	
Global Public Lounge	A relaxation space for socializing and informal gatherings.
Multipurpose room	A multipurpose room that can be used as a space for study, cultural activities and international exchanges etc. primarily by residents along with other TUMSAT's students.
Common kitchen	Kitchen for various events
Multipurpose restrooms	Restrooms accessible for people with disabilities
(2) Residents-only portion (2nd~10th floor)	
Public spaces (all floors except 1st floor)*	Places for relaxation and social exchanges
Laundry room (all floors except 1st floor)	Coin-operated laundry washers/dryers
Mail room (1st floor)	Mailboxes (for all rooms), delivery boxes
(3) Facilities outside the building	
Bicycle parking area	

Note: Common facilities are subject to change in line with proposals by the building operator or for other reasons.

Service	Details
Rental of home appliances and goods	Residents may rent bedding, appliances, etc. for a fee
Internet connection	Wired and wireless internet access is available in the residence rooms/halls and common facilities (no additional charge)
Vending machines	Snacks and beverages available from coin-operated machines

Note: Service details are subject to change in line with proposals by the building operator or for other reasons.

Future schedule (tentative)

- **May 2024: Start of the building construction**
- **February 2026: Completion of the building construction.**
- **March 2026: Start of the building operations**

Planned location of the building

■ Shinagawa Campus

